

Enforcement Response Plan Guide

SUPPLEMENT TO THE ENFORCEMENT RESPONSE PLAN

Enforcement Response Plan Guide

PART I: Reporting (FLOW CHART #I-3)

	Circumstances	Response	Personnel	Time Frame of Response	Compliance Status
Reporting Deficiencies	Minor deficiency (computational or typographical)	Written and e-mailed NOD requiring a corrected report within 5 days.	EMS, FC	5-Days from Discovery	Compliant
	No response received for NOD.	Written and e-mailed NOV requiring a report within 10 days.	EMS, FC	5-Days from Discovery	NC
	No response received for NOV.	SM called, AO issued.	DDO, EQPM, EMS, FC	20-Days from Initial Discovery	NC
	Major deficiency - isolated or infrequent incident (missing info, late report)	Written and e-mailed NOV, requiring a report within 10 days. RM requested.	EMS, FC	5-Days from Discovery	NC
	No response received for NOV.	SM called, AO issued.	DDO, EQPM, EMS, FC	20-Days from Initial Discovery	NC
	Second major deficiency in a row - (missing info, late report)	Written and e-mailed FNOV, requiring a report within 10 days. RM requested.	EMS, FC	5-Days from Discovery	NC
	No response received for FNOV.	SM called, AO issued.	DDO, EQPM, EMS, FC	20-Days from Initial Discovery	NC

DU = Director of Utilities	NOD = Notice of Deficiency	AP = Administrative Penalties
DDO = Deputy Director of Operations	NOV = Notice of Violation	SCH = Show Cause Hearing
EQPM = Environmental Qual. Program Manager	FNOV = Final Notice of Violation	JA = Judicial Action
EMS = Environmental Monitoring Supervisor	RM = Review Meeting	TPS = Terminate Permit & Service
FC = FOG Coordinator	SM = Standards Meeting	NC = Noncompliant
LS = Legal Staff	AO = Administrative Order	SNC = Significant Noncompliance

Enforcement Response Plan Guide

PART I: Reporting (FLOW CHART #I-6)

	Circumstances	Response	Personnel	Time Frame of Response	Compliance Status
Report false information	Any instance	SCH called, JA (including civil penalties), TPS.	DU, DDO, EQPM, EMS,LS	5-Days from Discovery	SNC

	Circumstances	Response	Personnel	Time Frame of Response	Compliance Status
Failure to report	Failure to respond to request or submit any required report later than 45 days of the due date	SCH called, JA (including civil penalties).	DU, DDO, EQPM, EMS, LS	50-Days from Due Date	SNC

DU = Director of Utilities	NOD = Notice of Deficiency	AP = Administrative Penalties
DDO = Deputy Director of Operations	NOV = Notice of Violation	SCH = Show Cause Hearing
EQPM = Environmental Qual. Program Manager	FNOV = Final Notice of Violation	JA = Judicial Action
EMS = Environmental Monitoring Supervisor	RM = Review Meeting	TPS = Terminate Permit & Service
FC = FOG Coordinator	SM = Standards Meeting	NC = Noncompliant
LS = Legal Staff	AO = Administrative Order	SNC = Significant Noncompliance

Enforcement Response Plan Guide

PART II: Effluent Limits & BMPs (FLOW CHART #II-1)

	Circumstances	Response	Personnel	Time Frame of Response	Compliance Status
Exceed permitted effluent limits or failed to follow BMPs	Exceedance caused known environmental (inhibition or pass-through) or POTW damage, 1-time event.	SCH called, AO issued, AP assessed.	DU, DDO, EQPM, EMS, FC	5-Days from Discovery	SNC
	Exceedance caused known environmental (inhibition or pass-through) or POTW damage, multiple times	SCH called, JA (including civil penalties).	DU, DDO, EQPM, EMS, LS	5-Days from Discovery	SNC
	Exceedance caused known environmental (inhibition or pass-through) or POTW damage, continuous	SCH called, TPS.	DU, DDO, EQPM, EMS, LS	15-Days from Initial Discovery	NA
	Isolated or infrequent exceedance, 1-time. < TRC	Written and e-mailed NOV requiring a report within 10 days.	EMS, FC	5-Days from Discovery	NC
	No response received for NOV.	SM called, AO issued.	DDO, EQPM, EMS, FC	20-Days from Initial Discovery	NC
	Second exceedance in a row. < TRC	Written and e-mailed FNOV, requiring a report within 10 days. RM requested.	EMS, FC	5-Days from Discovery	NC
	No response received for FNOV.	SM called, AO issued.	DDO, EQPM, EMS, FC	20-Days from Initial Discovery	NC

DU = Director of Utilities	NOD = Notice of Deficiency	AP = Administrative Penalties
DDO = Deputy Director of Operations	NOV = Notice of Violation	SCH = Show Cause Hearing
EQPM = Environmental Qual. Program Manager	FNOV = Final Notice of Violation	JA = Judicial Action
EMS = Environmental Monitoring Supervisor	RM = Review Meeting	TPS = Terminate Permit & Service
FC = FOG Coordinator	SM = Standards Meeting	NC = Noncompliant
LS = Legal Staff	AO = Administrative Order	SNC = Significant Noncompliance

Enforcement Response Plan Guide

PART II: Effluent Limits & BMPs (FLOW CHART #II-1: Continued)

	Circumstances	Response	Personnel	Time Frame of Response	Compliance Status
Exceed permitted effluent limits or failed to follow BMPs	No response received for the SM or AO.	SCH called, JA (including civil penalties).	DU, DDO, EQPM, EMS, LS	45-Days from Initial Discovery	SNC
	Working towards but not in compliance and not yet SNC	AP assessed until compliant or reached SNC	DDO, EQPM, EMS, FC	Ongoing	NC
	Does not follow through on written agreement AO.	SCH called, JA (including civil penalties).	DU, DDO, EQPM, EMS, LS	45-Days from Initial Discovery	SNC
	Not working towards compliance.	SCH called, TPS.	DU, DDO, EQPM, EMS, LS	90-Days from Initial Discovery	SNC
	Isolated or infrequent exceedance, 1-time. > TRC	Written and e-mailed NOV, requiring a report within 10 days. SM called.	EQPM, EMS, FC	5-Days from Discovery	NC
	No response received for NOV.	SM called, AO issued.	DDO, EQPM, EMS, FC	20-Days from Initial Discovery	NC
	Second exceedance in a row. > TRC	Written and e-mailed FNOV, requiring a report within 10 days. SM called.	DDO, EQPM, EMS, FC	5-Days from Discovery	NC
	No response received for FNOV.	SM called, AO issued.	DDO, EQPM, EMS, FC	20-Days from Initial Discovery	NC

DU = Director of Utilities	NOD = Notice of Deficiency	AP = Administrative Penalties
DDO = Deputy Director of Operations	NOV = Notice of Violation	SCH = Show Cause Hearing
EQPM = Environmental Qual. Program Manager	FNOV = Final Notice of Violation	JA = Judicial Action
EMS = Environmental Monitoring Supervisor	RM = Review Meeting	TPS = Terminate Permit & Service
FC = FOG Coordinator	SM = Standards Meeting	NC = Noncompliant
LS = Legal Staff	AO = Administrative Order	SNC = Significant Noncompliance

Enforcement Response Plan Guide

PART II: Effluent Limits & BMPs (FLOW CHART #II-1: Continued)

	Circumstances	Response	Personnel	Time Frame of Response	Compliance Status
Exceed permitted effluent limits or failed to follow BMPs	No response received for the SM or AO.	SCH called, JA (including civil penalties).	DU, DDO, EQPM, EMS, LS	45-Days from Initial Discovery	SNC
	FSE working towards but not in compliance and not yet SNC	SM called, AP assessed until compliant or reached SNC	DDO, EQPM, EMS, FC	Ongoing	NC
	Does not follow through on written agreement AO.	SCH called, JA (including civil penalties).	DU, DDO, EQPM, EMS, LS	45-Days from Initial Discovery	SNC
	Not working towards compliance.	SCH called, JA (including civil penalties), TPS.	DU, DDO, EQPM, EMS, LS	90-Days from Initial Discovery	SNC
	Frequent or continued violation, puts FSE in SNC.	SM called, AO issued, AP assessed.	DDO, EQPM, EMS, FC	90-Days from Initial Discovery	SNC
	No response received for the AO or SM.	SCH called, JA (including civil penalties).	DU, DDO, EQPM, EMS, LS	45-Days from Initial Discovery	SNC
	FSE working towards but not in compliance but in SNC	SM called, AP assessed until compliant or reached SNC, Consent Schedule in permit.	DDO, EQPM, EMS, FC	Ongoing	SNC
	FSE refuses or will not come into compliance.	SCH called, JA (including civil penalties), TPS.	DU, DDO, EQPM, EMS, LS	30-Days from Initial Discovery	SNC

DU = Director of Utilities	NOD = Notice of Deficiency	AP = Administrative Penalties
DDO = Deputy Director of Operations	NOV = Notice of Violation	SCH = Show Cause Hearing
EQPM = Environmental Qual. Program Manager	FNOV = Final Notice of Violation	JA = Judicial Action
EMS = Environmental Monitoring Supervisor	RM = Review Meeting	TPS = Terminate Permit & Service
FC = FOG Coordinator	SM = Standards Meeting	NC = Noncompliant
LS = Legal Staff	AO = Administrative Order	SNC = Significant Noncompliance

Enforcement Response Plan Guide

PART II: Effluent Limits & BMPs (FLOW CHART #II-3)

	Circumstances	Response	Personnel	Time Frame of Response	Compliance Status
Discharge without a permit or approval	Discharge has no known environmental (inhibition or pass-through) or POTW damage, 1-time event.	SM called, AO issued.	DDO, EQPM, EMS, FC	5-Days from Discovery	NC
	Discharge has no known environmental (inhibition or pass-through) or POTW damage, multiple times.	SCH called, JA (including civil penalties).	DU, DDO, EQPM, EMS, LS	5-Days from Discovery	SNC
	Discharge has no known environmental (inhibition or pass-through) or POTW damage, continuous.	SCH called, TPS.	DU, DDO, EQPM, EMS, LS	15-Days from Initial Discovery	SNC
	Discharge caused known environmental (inhibition or pass-through) or POTW damage, 1-time event.	SCH called, JA (including civil penalties).	DU, DDO, EQPM, EMS, LS	5-Days from Discovery	SNC
	Discharge caused known environmental (inhibition or pass-through) or POTW damage, multiple times	SCH called, JA (including civil penalties).	DU, DDO, EQPM, EMS, LS	5-Days from Discovery	SNC
	Discharge caused known environmental (inhibition or pass-through) or POTW damage, continuous	SCH called, TPS.	DU, DDO, EQPM, EMS, LS	15-Days from Initial Discovery	SNC

DU = Director of Utilities	NOD = Notice of Deficiency	AP = Administrative Penalties
DDO = Deputy Director of Operations	NOV = Notice of Violation	SCH = Show Cause Hearing
EQPM = Environmental Qual. Program Manager	FNOV = Final Notice of Violation	JA = Judicial Action
EMS = Environmental Monitoring Supervisor	RM = Review Meeting	TPS = Terminate Permit & Service
FC = FOG Coordinator	SM = Standards Meeting	NC = Noncompliant
LS = Legal Staff	AO = Administrative Order	SNC = Significant Noncompliance

Enforcement Response Plan Guide

PART III: Non-compliance Detected Through Inspection/Field Investigation (FLOW CHART #III-2)

	Circumstances	Response	Personnel	Time Frame of Response	Compliance Status
Violation of permit conditions	No evidence of negligence or intent	Verbal, written and e-mailed NOV requiring immediate correction and a report within 10 days.	EMS, FC	5-Days from Discovery	NC
	No response received for NOV.	SM called, AO issued.	DDO, EQPM, EMS, FC	20-Days from Initial Discovery	NC
	No response received for the SM or AO.	SCH called, JA (including civil penalties).	DU, DDO, EQPM, EMS, LS	45-Days from Initial Discovery	SNC
	Does not follow through on written agreement AO.	SCH called, JA (including civil penalties).	DU, DDO, EQPM, EMS, LS	45-Days from Initial Discovery	SNC
	Evidence of negligence or intent (not deemed extreme)	SCH called, JA (including civil penalties).	DU, DDO, EQPM, EMS, LS	5-Days from Discovery	SNC
	Evidence of negligence or intent (deemed extreme)	SCH called, TPS.	DU, DDO, EQPM, EMS, LS	10-Days from Discovery	SNC
	FSE works towards compliance	AP assessed until compliant.	DDO, EQPM, EMS, FC	Ongoing	Maybe SNC
	FSE refuses or will not come into compliance.	SCH called, TPS.	DU, DDO, EQPM, EMS, LS	90-Days from Initial Discovery	SNC

DU = Director of Utilities	NOD = Notice of Deficiency	AP = Administrative Penalties
DDO = Deputy Director of Operations	NOV = Notice of Violation	SCH = Show Cause Hearing
EQPM = Environmental Qual. Program Manager	FNOV = Final Notice of Violation	JA = Judicial Action
EMS = Environmental Monitoring Supervisor	RM = Review Meeting	TPS = Terminate Permit & Service
FC = FOG Coordinator	SM = Standards Meeting	NC = Noncompliant
LS = Legal Staff	AO = Administrative Order	SNC = Significant Noncompliance

Enforcement Response Plan Guide

PART III: Non-compliance Detected Through Inspection/Field Investigation (FLOW CHART #III-3)

	Circumstances	Response	Personnel	Time Frame of Response	Compliance Status
Refuse access to City Personnel	Refusal of access to City personnel for the purpose of inspection, sampling, or monitoring	Obtain search warrant, SCH called, TPS.	DU, DDO, EQPM, EMS, LS	ASAP	SNC

PART III: Non-compliance Detected Through Inspection/Field Investigation (FLOW CHART #III-4)

	Circumstances	Response	Personnel	Time Frame of Response	Compliance Status
Failure to comply with repeated requests	Failure to comply with repeated request	SCH called, TPS.	DU, DDO, EQPM, EMS, LS	ASAP	SNC

DU = Director of Utilities	NOD = Notice of Deficiency	AP = Administrative Penalties
DDO = Deputy Director of Operations	NOV = Notice of Violation	SCH = Show Cause Hearing
EQPM = Environmental Qual. Program Manager	FNOV = Final Notice of Violation	JA = Judicial Action
EMS = Environmental Monitoring Supervisor	RM = Review Meeting	TPS = Terminate Permit & Service
FC = FOG Coordinator	SM = Standards Meeting	NC = Noncompliant
LS = Legal Staff	AO = Administrative Order	SNC = Significant Noncompliance

Enforcement Response Plan Guide

PART I: Reporting

FLOW CHART #I-3

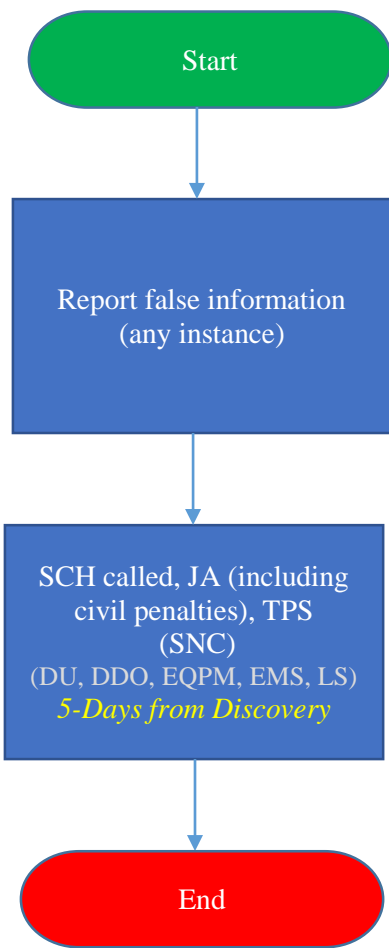


DU = Director of Utilities	NOD = Notice of Deficiency	AP = Administrative Penalties
DDO = Deputy Director of Operations	NOV = Notice of Violation	SCH = Show Cause Hearing
EQPM = Environmental Qual. Program Manager	FNOV = Final Notice of Violation	JA = Judicial Action
EMS = Environmental Monitoring Supervisor	RM = Review Meeting	TPS = Terminate Permit & Service
FC = FOG Coordinator	SM = Standards Meeting	NC = Noncompliant
LS = Legal Staff	AO = Administrative Order	SNC = Significant Noncompliance

Enforcement Response Plan Guide

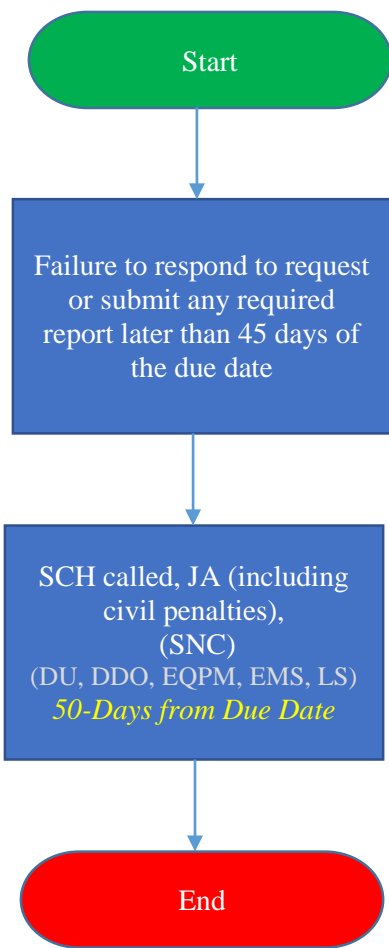
PART I: Reporting:

FLOW CHART #I-6



PART I: Reporting:

FLOW CHART #I-7

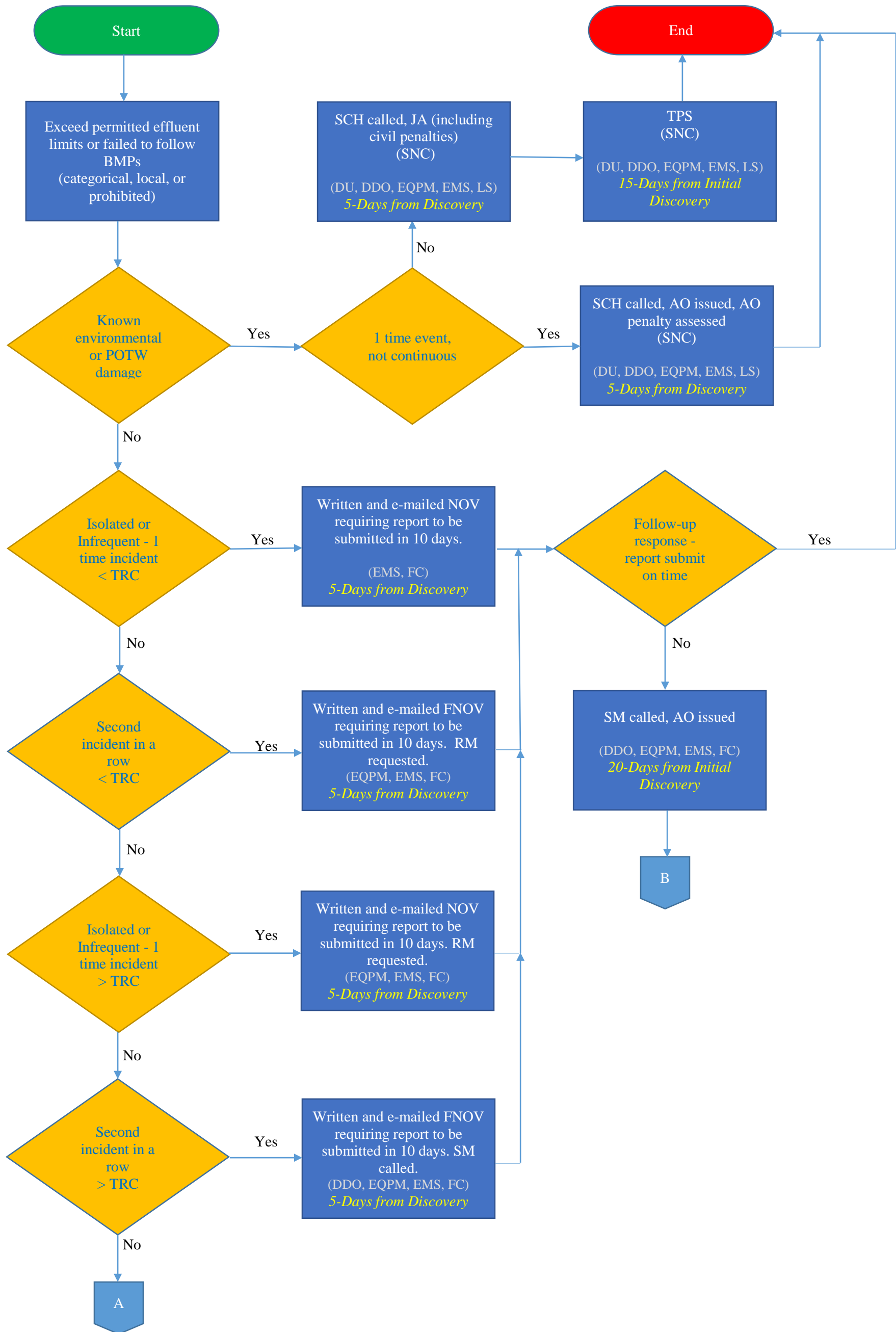


DU = Director of Utilities	NOD = Notice of Deficiency	AP = Administrative Penalties
DDO = Deputy Director of Operations	NOV = Notice of Violation	SCH = Show Cause Hearing
EQPM = Environmental Qual. Program Manager	FNOV = Final Notice of Violation	JA = Judicial Action
EMS = Environmental Monitoring Supervisor	RM = Review Meeting	TPS = Terminate Permit & Service
FC = FOG Coordinator	SM = Standards Meeting	NC = Noncompliant
LS = Legal Staff	AO = Administrative Order	SNC = Significant Noncompliance

Enforcement Response Plan Guide

PART II: Effluent Limits & BMPs:

FLOW CHART #II-1

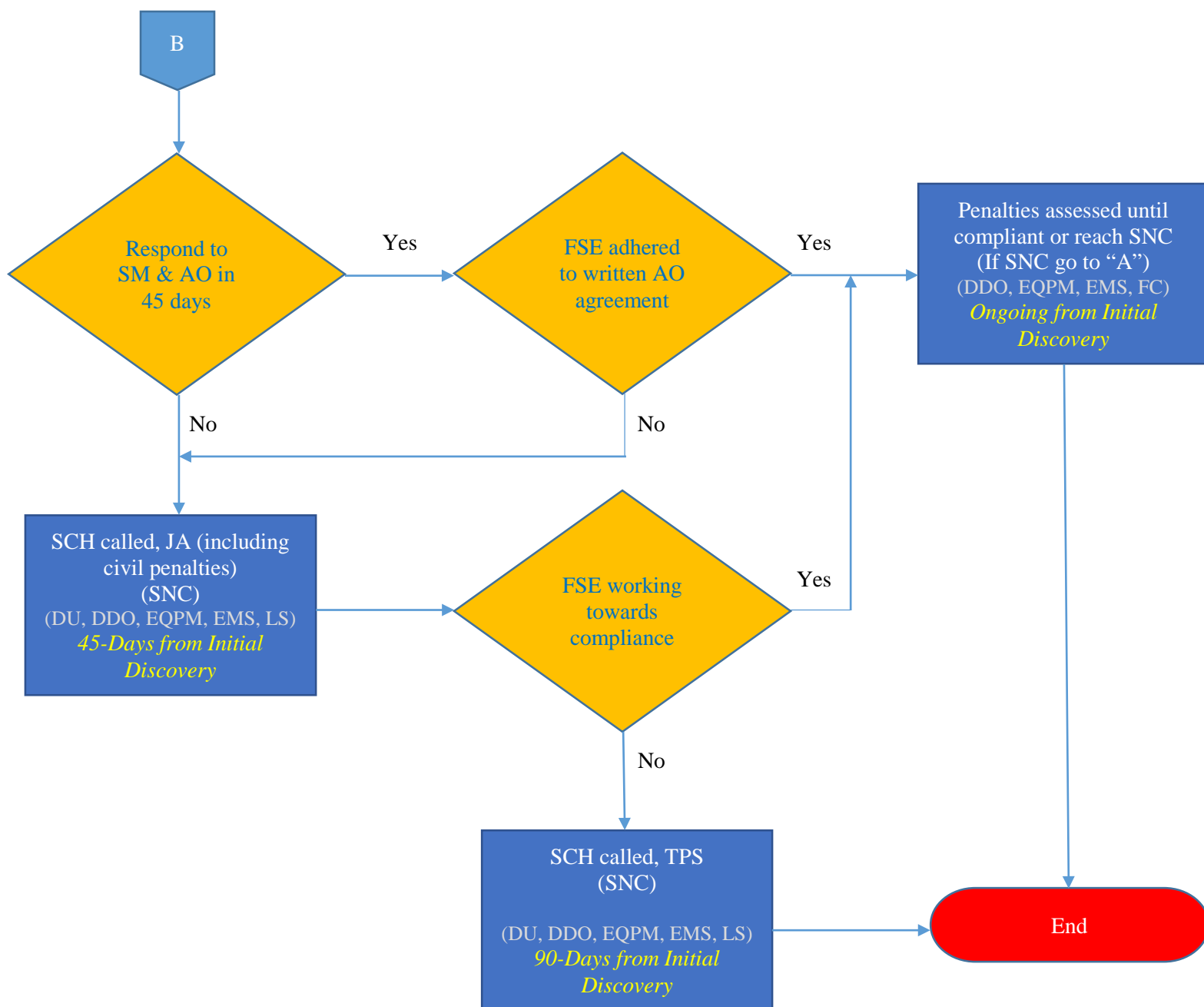
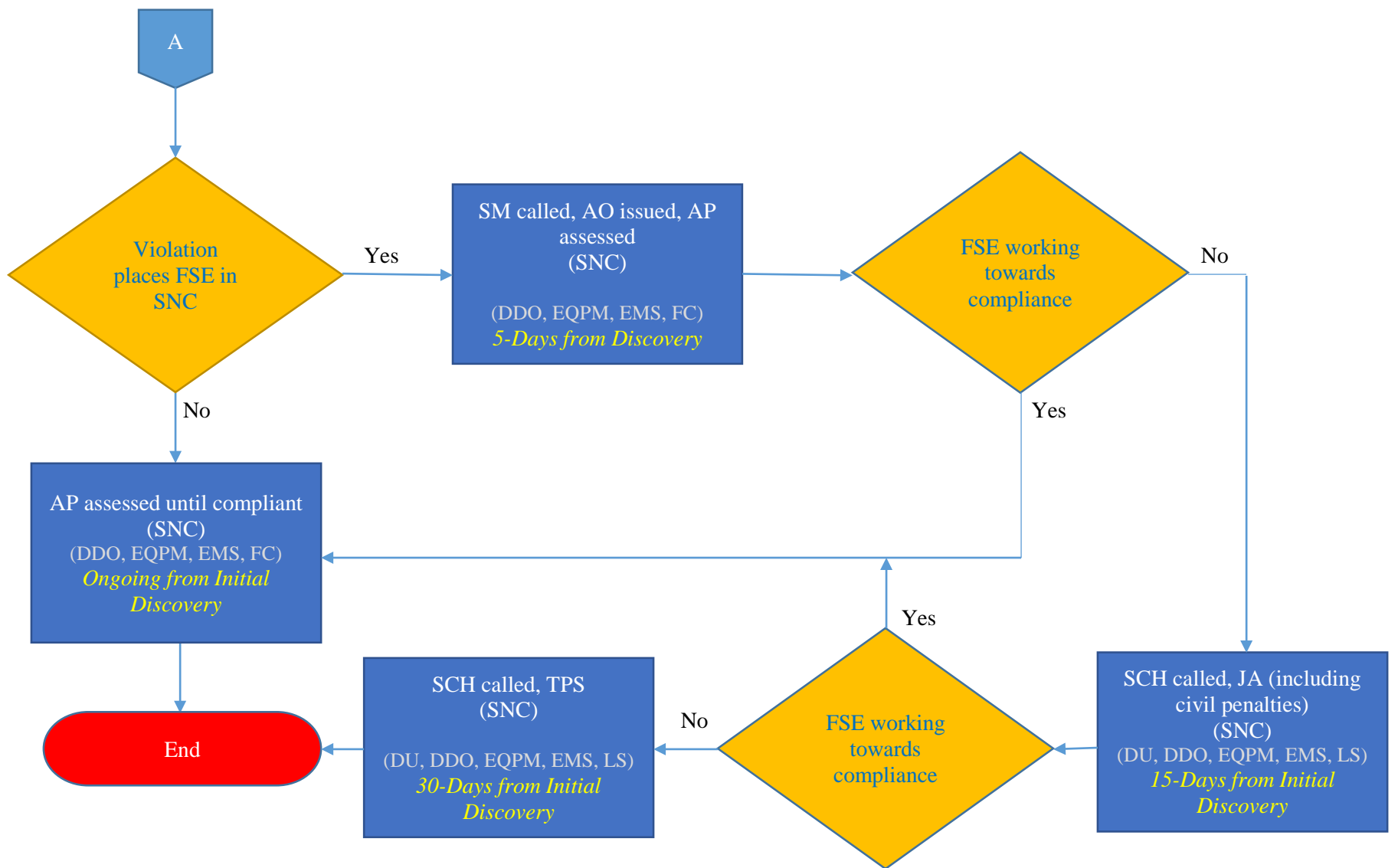


DU = Director of Utilities	NOD = Notice of Deficiency	AP = Administrative Penalties
DDO = Deputy Director of Operations	NOV = Notice of Violation	SCH = Show Cause Hearing
EQPM = Environmental Qual. Program Manager	FNOV = Final Notice of Violation	JA = Judicial Action
EMS = Environmental Monitoring Supervisor	RM = Review Meeting	TPS = Terminate Permit & Service
FC = FOG Coordinator	SM = Standards Meeting	NC = Noncompliant
LS = Legal Staff	AO = Administrative Order	SNC = Significant Noncompliance

Enforcement Response Plan Guide

PART II: Effluent Limits & BMPs:

FLOW CHART #II-1 (Continued)

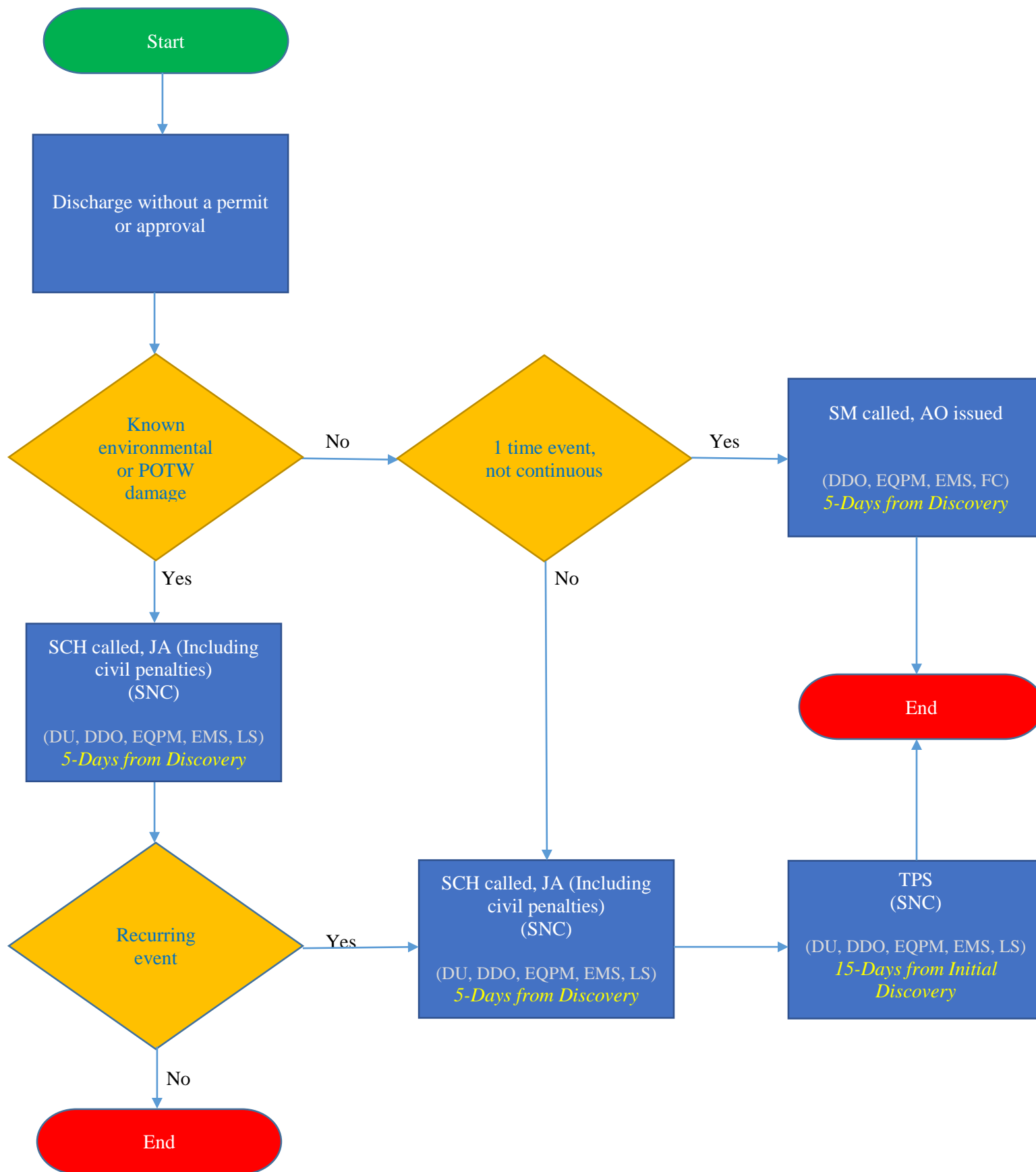


DU = Director of Utilities	NOD = Notice of Deficiency	AP = Administrative Penalties
DDO = Deputy Director of Operations	NOV = Notice of Violation	SCH = Show Cause Hearing
EQPM = Environmental Qual. Program Manager	FNOV = Final Notice of Violation	JA = Judicial Action
EMS = Environmental Monitoring Supervisor	RM = Review Meeting	TPS = Terminate Permit & Service
FC = FOG Coordinator	SM = Standards Meeting	NC = Noncompliant
LS = Legal Staff	AO = Administrative Order	SNC = Significant Noncompliance

Enforcement Response Plan Guide

PART II: Effluent Limits & BMPs:

FLOW CHART #II-3

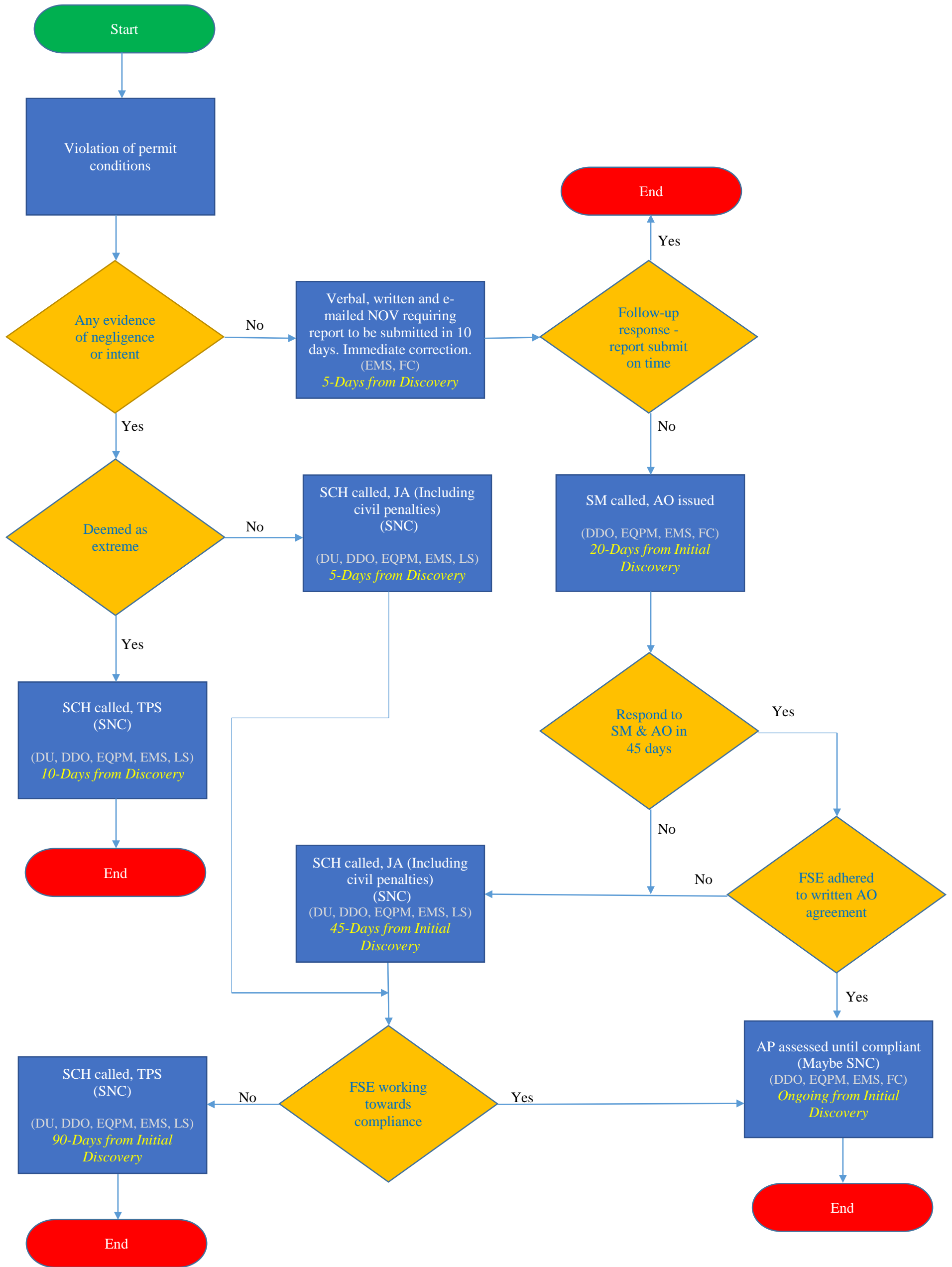


DU = Director of Utilities	NOD = Notice of Deficiency	AP = Administrative Penalties
DDO = Deputy Director of Operations	NOV = Notice of Violation	SCH = Show Cause Hearing
EQPM = Environmental Qual. Program Manager	FNOV = Final Notice of Violation	JA = Judicial Action
EMS = Environmental Monitoring Supervisor	RM = Review Meeting	TPS = Terminate Permit & Service
FC = FOG Coordinator	SM = Standards Meeting	NC = Noncompliant
LS = Legal Staff	AO = Administrative Order	SNC = Significant Noncompliance

Enforcement Response Plan Guide

PART III: Non-compliance Detected Through Inspections/Field Investigations:

FLOW CHART #III-2

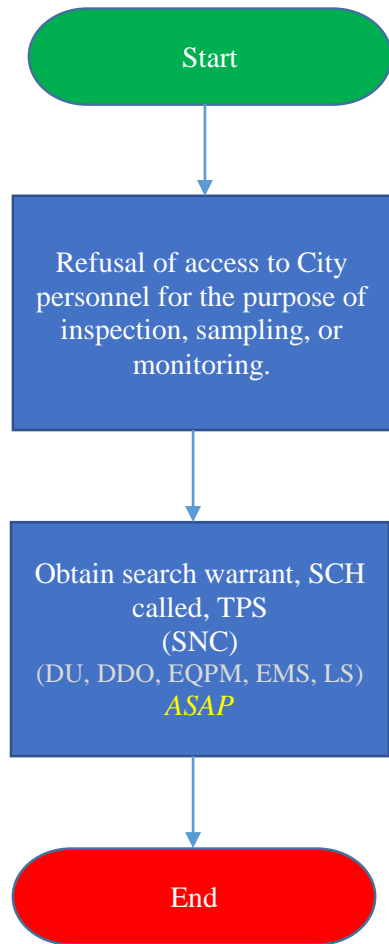


DU = Director of Utilities	NOD = Notice of Deficiency	AP = Administrative Penalties
DDO = Deputy Director of Operations	NOV = Notice of Violation	SCH = Show Cause Hearing
EQPM = Environmental Qual. Program Manager	FNOV = Final Notice of Violation	JA = Judicial Action
EMS = Environmental Monitoring Supervisor	RM = Review Meeting	TPS = Terminate Permit & Service
FC = FOG Coordinator	SM = Standards Meeting	NC = Noncompliant
LS = Legal Staff	AO = Administrative Order	SNC = Significant Noncompliance

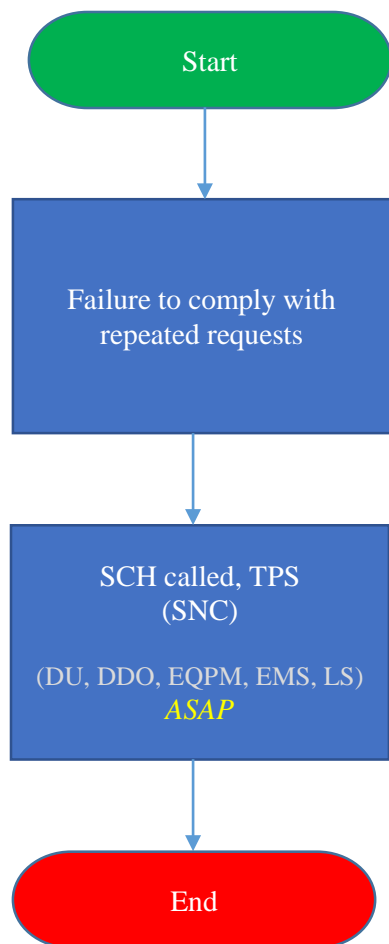
Enforcement Response Plan Guide

PART III: Non-compliance Detected Through Inspections/Field Investigations:

FLOW CHART #III-3



FLOW CHART #III-4



DU = Director of Utilities	NOD = Notice of Deficiency	AP = Administrative Penalties
DDO = Deputy Director of Operations	NOV = Notice of Violation	SCH = Show Cause Hearing
EQPM = Environmental Qual. Program Manager	FNOV = Final Notice of Violation	JA = Judicial Action
EMS = Environmental Monitoring Supervisor	RM = Review Meeting	TPS = Terminate Permit & Service
FC = FOG Coordinator	SM = Standards Meeting	NC = Noncompliant
LS = Legal Staff	AO = Administrative Order	SNC = Significant Noncompliance